



—  
One SKU. One Solution.  
SolarEdge Single SKU Home Hub Inverter

# Single SKU Defined

- / Home Hub inverter that can be configured to any inverter size required for the home
  - 3.8, 5.7, 7.6, 9.6, 10, 11.4
  - All with 12.5kW continuous power
- / Nameplate rating will be locked at commissioning step
- / Wifi enabled, LTE cell kit purchased separately
- / Production and consumption monitoring capable
- / Ability to attached three batteries per inverter
- / 12-year warranty





# Simplify Your Installation with Single SKU

1. Adhere the proper nameplate sticker provided in the box to the inverter
2. Install Home Hub as usual
3. Commission the inverter through SolarEdge Go and configure to inverter nameplate rating desired

---

# Benefits of Moving to Single SKU

## For Installation & Distribution

- Inventory management – one box
- Forecasting – one box
- Service/O&M – one box
- Decreased pricing on Average-large sized systems

## For Sales

- Less change orders (especially with multi-inverter scenarios)
- Simplified conversations with homeowners



# What is SolarEdge Go?

## / Comprehensive Functionality

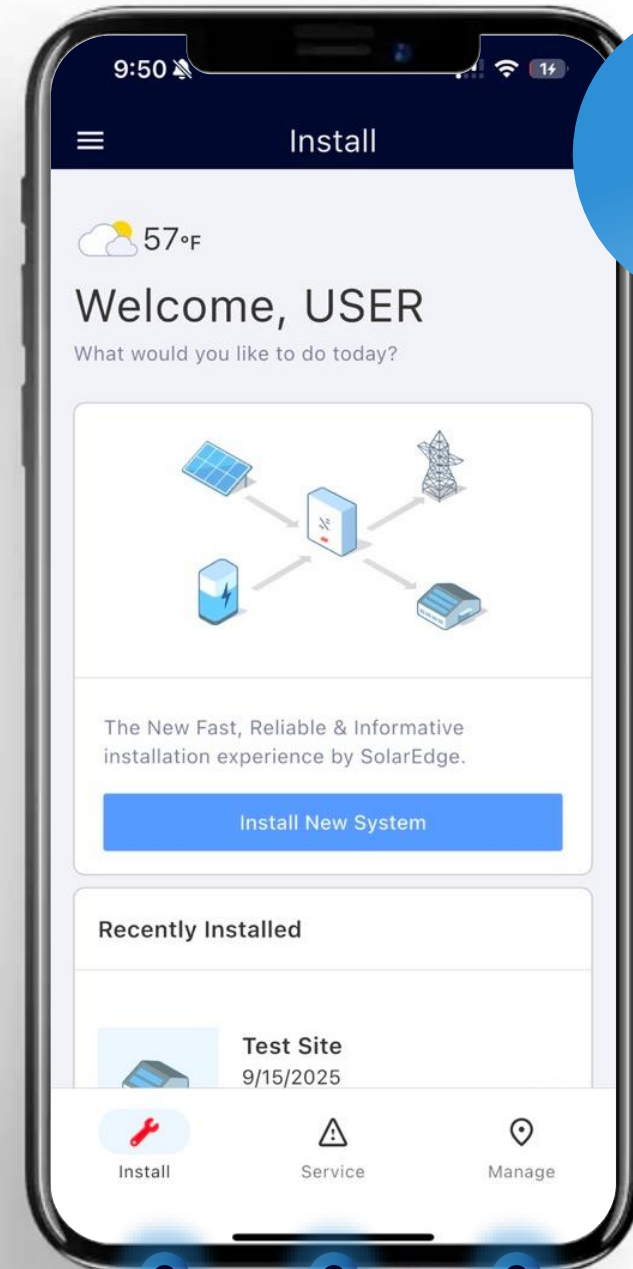
- Expand beyond commissioning and configuring to include end to end installation

## / Enhanced Mobility

- Enabling remote connectivity and config, eliminating need for on-site presence or proximity to inverter

## / Seamless Data Sync

- Ensures real-time data integration between SolarEdge GO and our SaaS data platform



NEW!



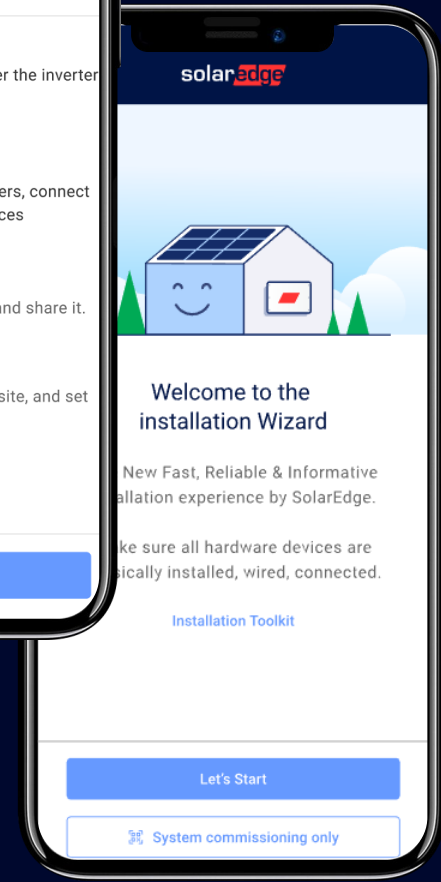
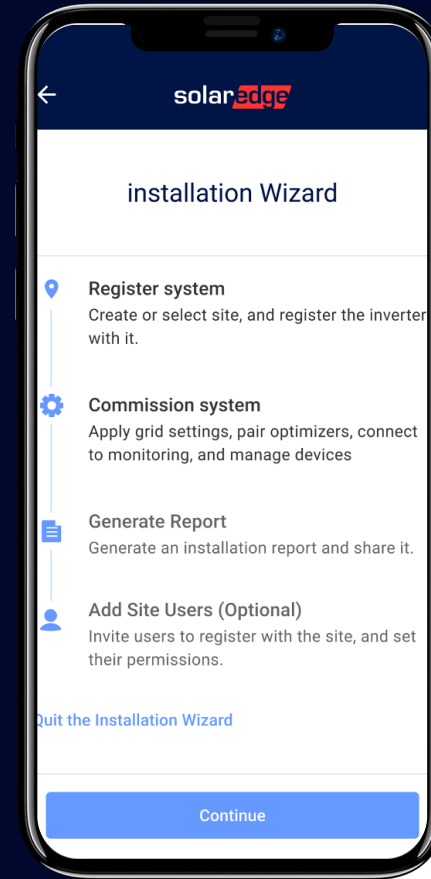
Install Service Manage

solar**edge**

# Install SolarEdge Go Today



SolarEdge Go will be the single app for commissioning and configuring SolarEdge Inverters. Install today!



---

# Product Details

# Home Hub Single SKU Transition



USE3800H-USMNB78  
SE3800H-US



USE5700H-USMNB78  
SE5700H-US



USE7600H-USMNB78  
SE7600H-US



USE9600H-USMNB78  
SE9600H-US



USE10000H-USMNB78  
SE10000H-US



USE11400H-USMNB78  
SE11400H-US



USE11400H-USSKBZ8

All existing models supported  
by a single P/N

SE3800H-US  
SE5700H-US  
SE7600H-US  
SE9600H-US  
SE10000H-US  
SE11400H-US

+

SE3000H-US  
SE5000H-US  
SE6000H-US

Required model to be set by  
installer onsite during  
commissioning

Commissioned via **SolarEdge Go**  
New commissioning app

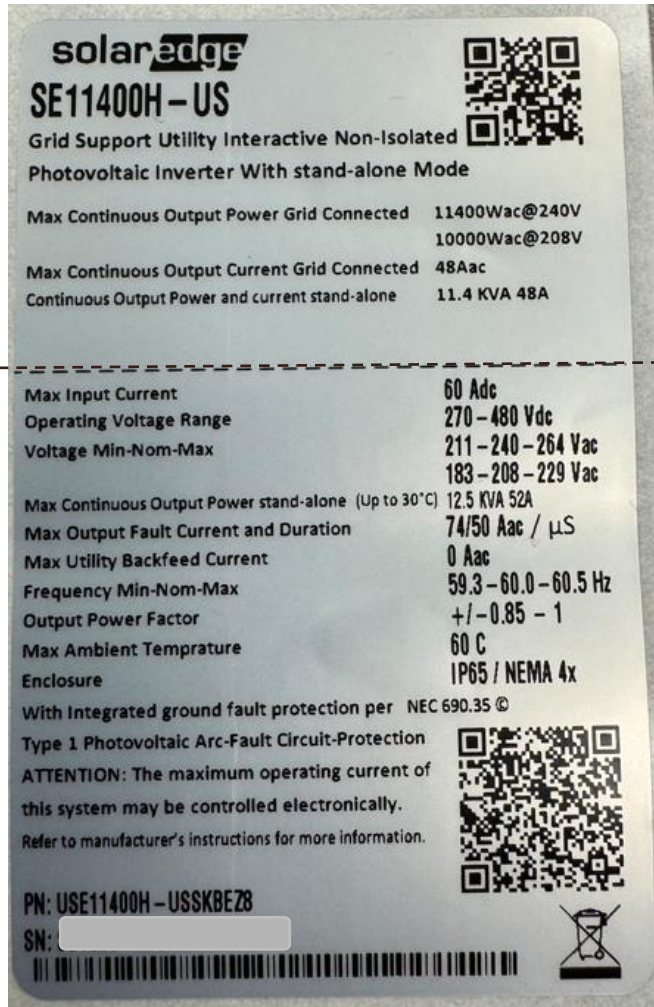
Commissioned via **SetApp**

---

# Key Single SKU Take Aways

- / Inverter part number has changed to SE11400H-USSKBEZ8
- / Installer now must set inverter power model at the time of commissioning
- / Inverter label has changed
  - Inverter ships from factory as SE11400H-US model
  - Installer now responsible for applying appropriate model label sticker, if changing from SE11400H-US
- / SolarEdge Go, new application required for commissioning
- There is no change to product certification

# Single SKU Inverter Label



- Inverter comes from the factory with SE11400H-US model label at the top
- Top label section
  - Unique per model
  - New label to be applied by installer if setting to any model power excluding SE11400H-US
- Bottom label section
  - Unique per inverter S/N
  - Specifications listed apply to all inverter models

# Old Label Vs New Label



Previous label example

Vs



New single SKU label as it comes from the factory

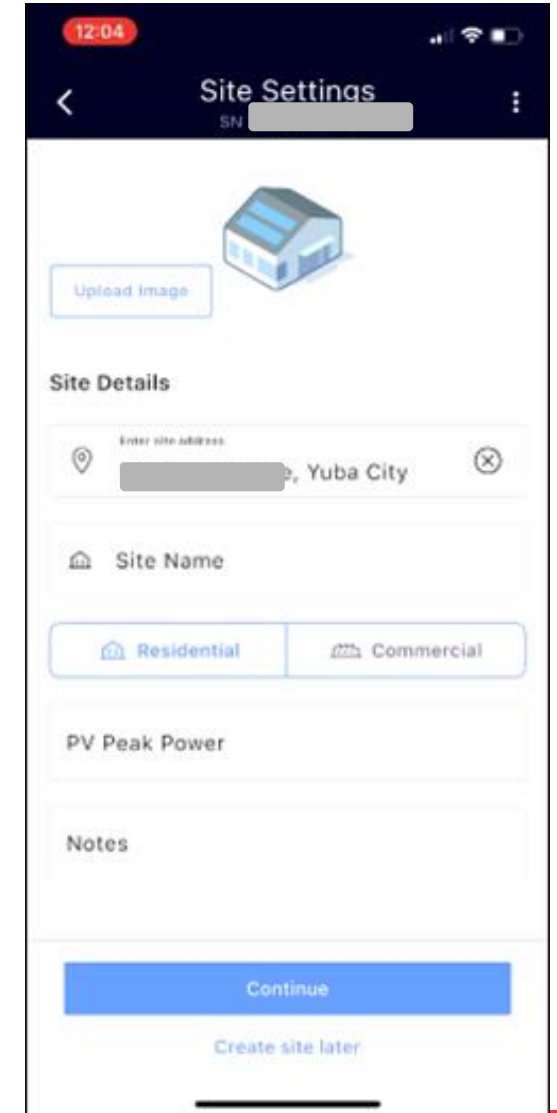
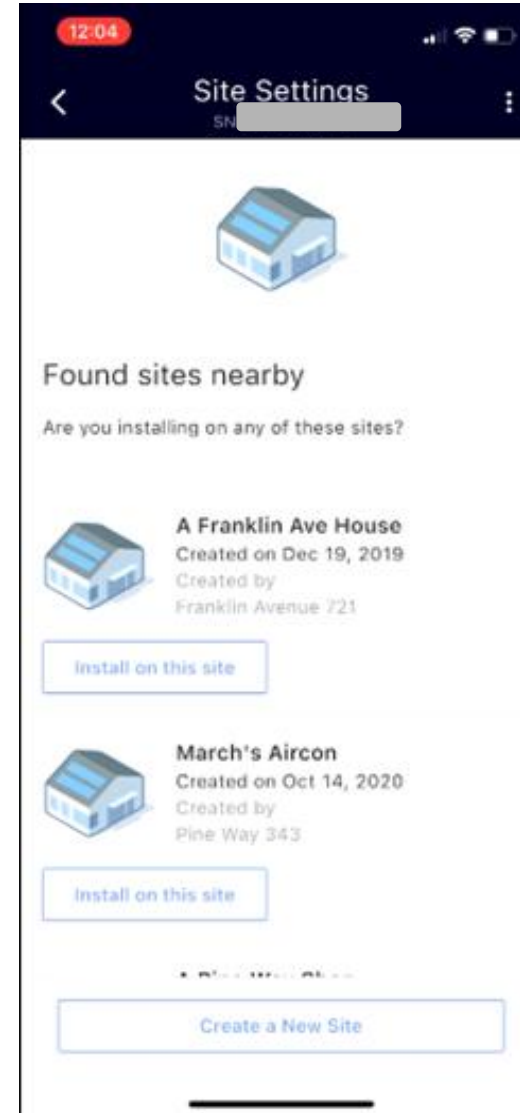
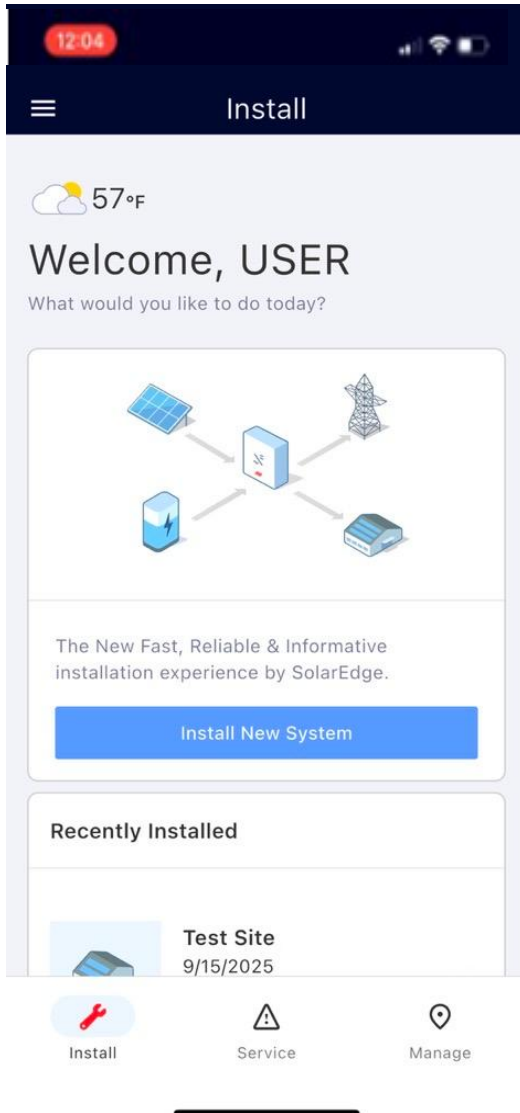


New single SKU label with SE7600H-US model label applied onsite

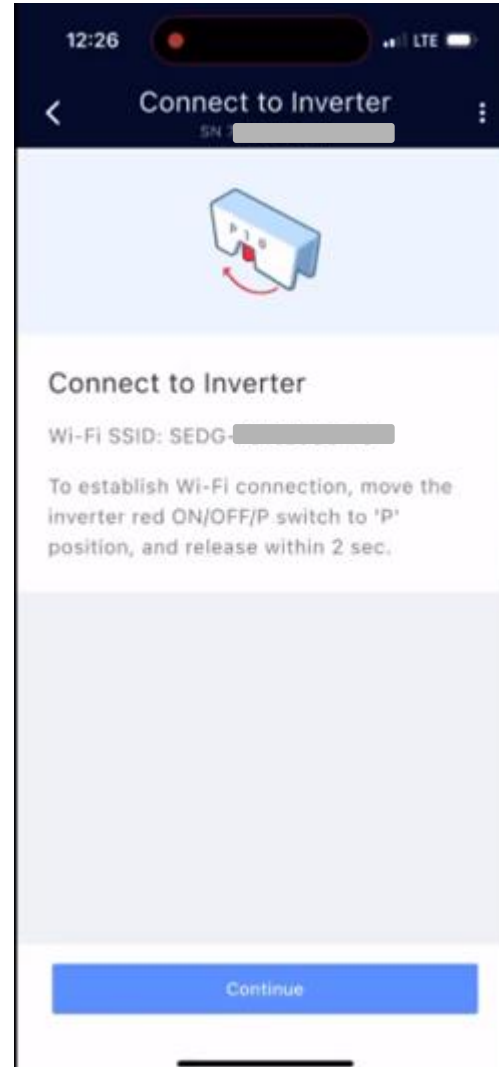
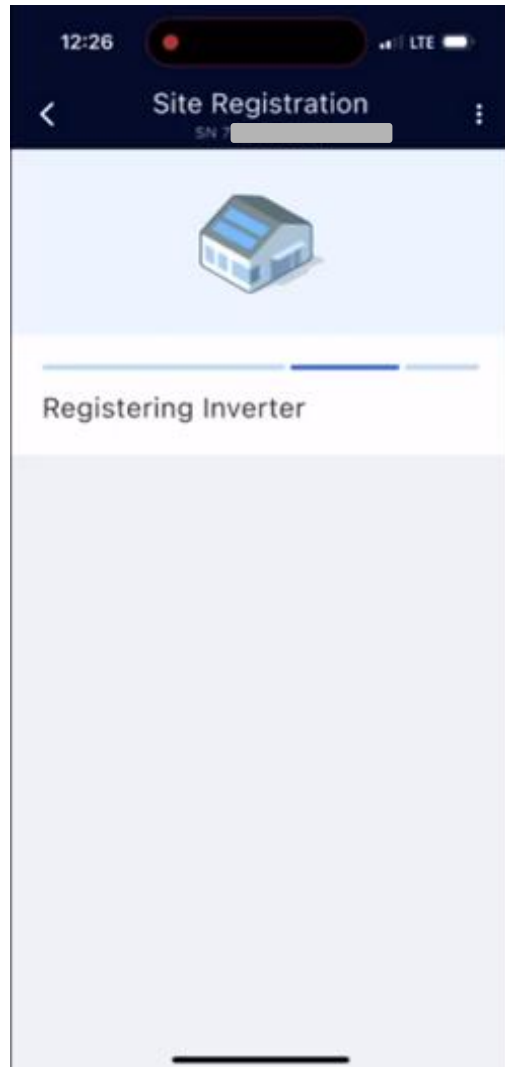
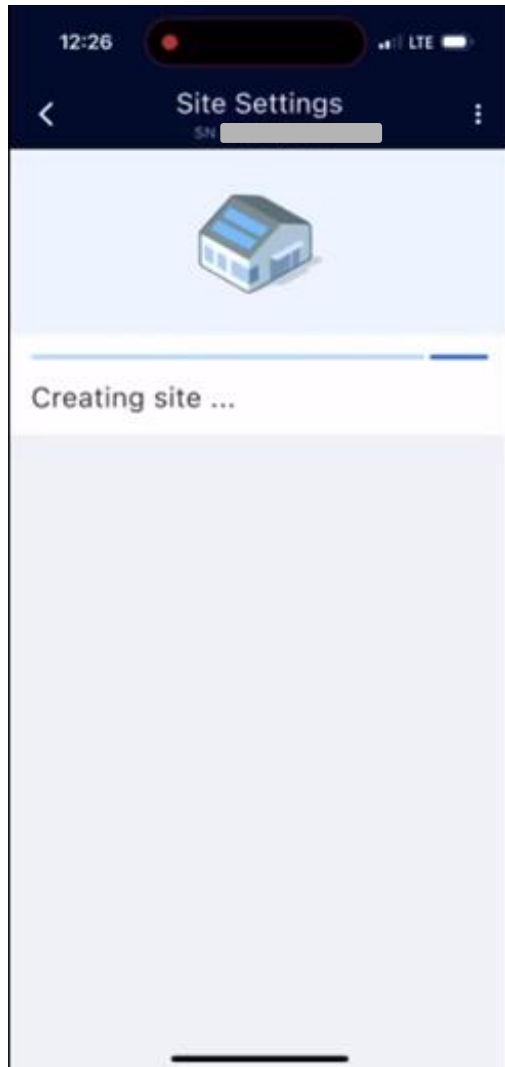
# Model Number Vs Part Number

Model Number(s)	Part Number
SE3000H-US*, SE3800H-US, SE5000H-US*, SE5700H-SE6000H-US*, SE SE7600H-US, SE9600H-US, SE10000H-US, SE11400H-US	USE11400H-USSKBEZ8
<ul style="list-style-type: none"><li>• No change to existing model numbers supported</li><li>• No change to inverter specifications, listing, certification</li><li>• Relevant for Design, Engineering, Permitting</li><li>• Must be included in AHJ and Utility plan sets for approval</li></ul> <p>*Legacy models supported for RMA's</p>	<ul style="list-style-type: none"><li>• Relevant for Procurement, Ordering, Distribution, Forecasting</li><li>• Includes information about components, build changes (if any), manufacturing location</li></ul>

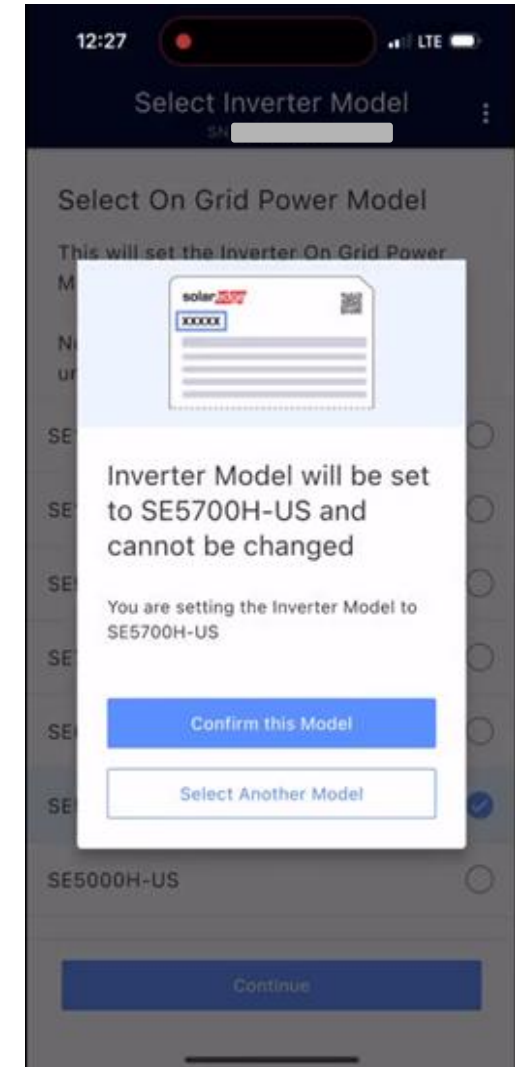
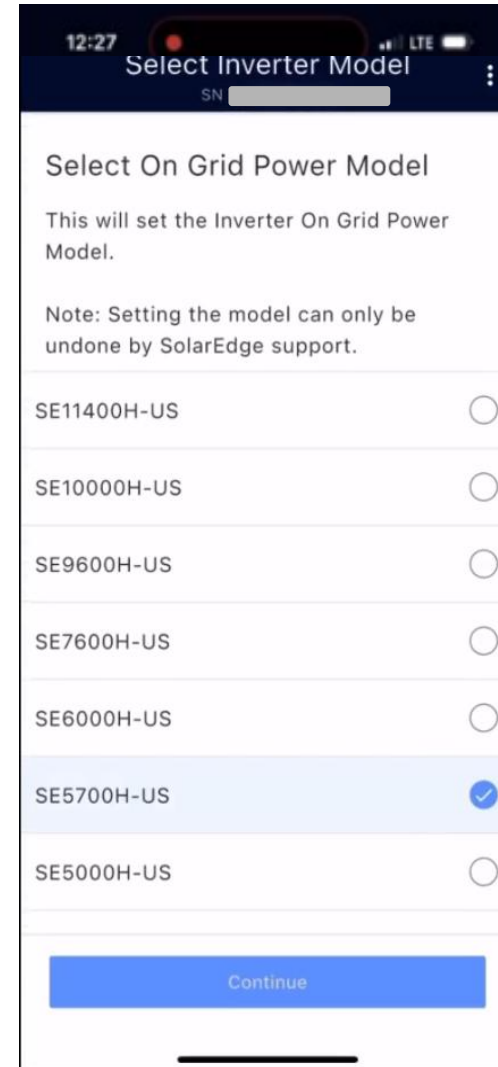
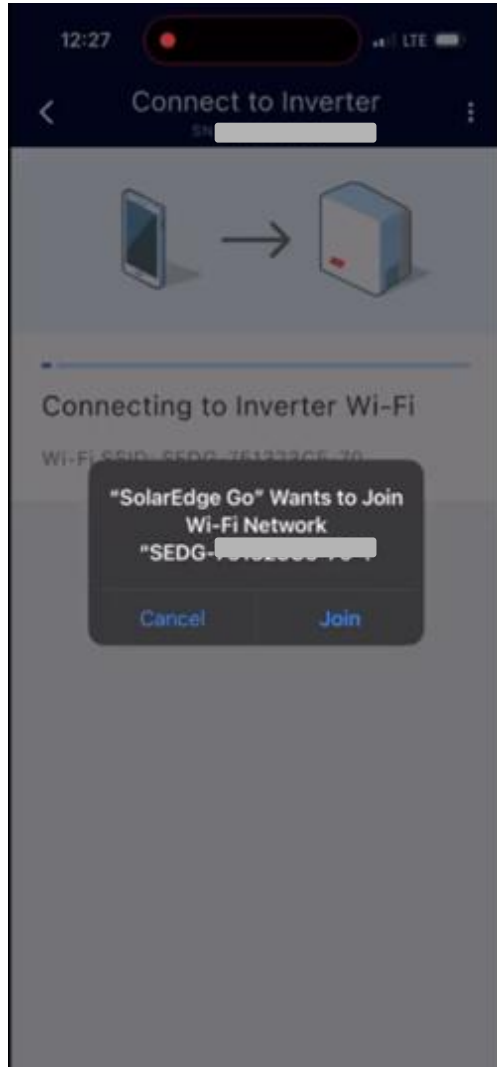
# Commissioning Flow in SolarEdge Go (1/3)



# Commissioning Flow in SolarEdge Go (2/3)



# Commissioning Flow in SolarEdge Go (3/3)



# Commissioning Report

## / Purpose of commissioning report?

- To validate with Utility, AHJ, the inverter model power class set onsite by the installer

## / How can commissioning report be generated?

- Installer to generate this report at the end of commissioning process via SolarEdge Go application

## / What does commissioning report include?

- Site Information
- Homeowner information
- Inverter model
- Inverter settings
- Power control details

**Commissioning Report 1/3** SN [REDACTED]

### INSTALLER DETAILS

Installer [REDACTED]  
Account ID [REDACTED]  
Account Name [REDACTED]

### SITE DETAILS

Site ID [REDACTED]  
Site Name Shane [REDACTED]  
Home Owner Name [REDACTED]  
Site Full Address [REDACTED], San Rafael, CA, US  
Production 6.07 kW  
Limit 7.6 kW  
Communicating 1 of 1

### INVERTER (75132202-AC)

Part Number USE11400H-USSKBEZ8  
Inverter Model SE7600H-US  
Activation Activated  
Inverter's Circuit Breaker 0 A

### COUNTRY & GRID

Grid Code US 240V

### OPTIMIZERS

Reporting 26  
Not Reporting 0

### MONITORING COMMUNICATION

Status Connected (S\_OK) via Wi-Fi  
Wi-Fi Network TMOBILE-92B8

### SITE COMMUNICATION

RS485-1 Modbus (Multi-Device)  
RS485-2 SolarEdge Follower  
Modbus TCP Disabled

### FW VERSIONS

Inverter  
CPU 4.24.9  
DSP1 1.100.2058  
DSP2 2.100.1751

### Meter

Meter 0.3046.0

# RMA – One SKU to rule them all

- / Single SKU, USE11400H-USSKBEZ8, to support – new installs & RMA's
- / All active & legacy models supported for RMA's, all labels provided in inverter box
  - Active models: SE3800H-US, SE5700H-US, SE7600H-US, SE9600H-US, SE10000H-US, SE11400H-US
  - Legacy models: SE3000H-US, SE5000H-US, SE6000H-US
- / USE11400H-USSKBEZ8 to be shipped as replacement inverter for:
  - Home Hub (excluding LG battery installs)
  - Home Wave
  - A-Series (on grid applications)



# Introducing SFM14 for RMA's

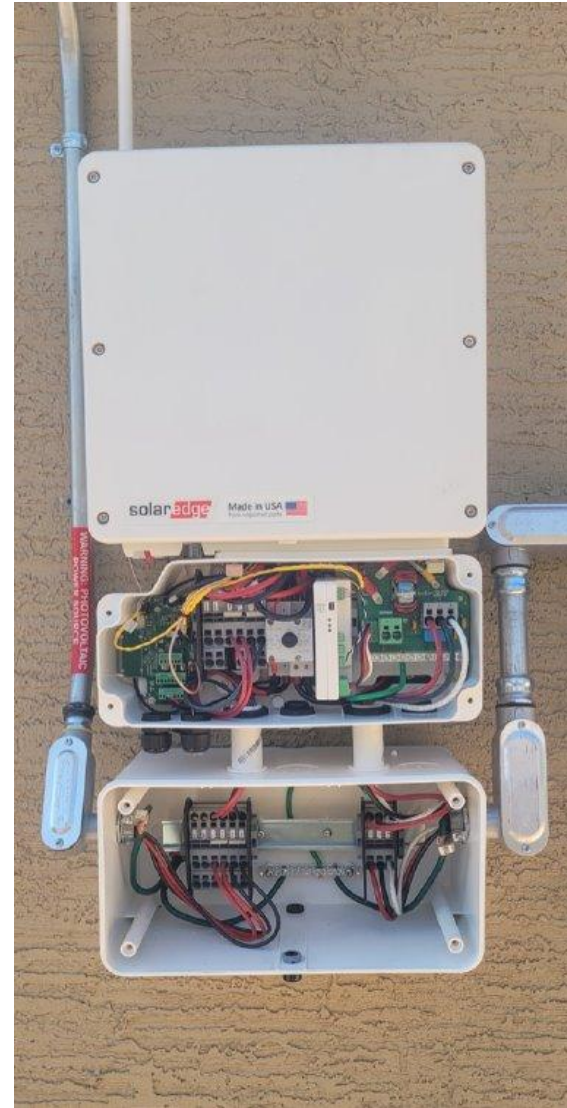
- What is SolarEdge Fast Mount 14 (SFM14)?
  - A wire management interface that makes legacy inverters compatible with Single SKU Home Hub
- Key benefits of installing SFM14 in RMA's?
  - Supports flexible conduit entrances – both sides & bottom
  - Re-use existing conduits onsite



# SFM14 Installation Example (1/2)



Before – Home Wave/HD Wave



After – Home Hub with SFM14

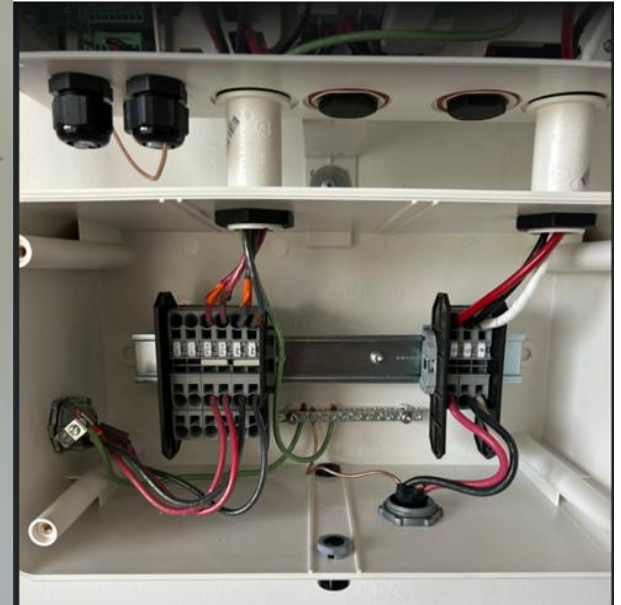
# SFM14 Installation Example (2/2)



Before – A-Series



After – Home Hub with SFM14



Inside SFM14

# Documentation & Training

Everything you need in one Resource Portal

- // Datasheet
- // Installation guide
- // RMA Installation guide
- // Application note with Bill Brooks' vote of confidence
- // Training videos
- // Installer FAQ

**One SKU. One Solution.**  
The same reliable Home Hub Inverter, unified for ease of design, installation, and inventory management.

**One Installation. All Power Ratings.**

- 1  
Apply nameplate sticker to inverter
- 2  
Install the Home Hub Inverter as usual
- 3  
Commission and lock in the correct rating using SolarEdge Go app

Note: SolarEdge Go is required for commissioning Single SKU inverters.

**solar**edge

# What are the Next Steps for Installers?

- Download SolarEdge Go and start using it today
- Review the Single SKU Resource page for installation guides and training videos
- Be prepared to receive Single SKU inverters in the RMA channel
- Distribution has Single SKU price list and it's available to order
- All new inverters shipped effective Dec 1st will be Single SKU